

South Tipperary Social Programme Management Group

Action Plan 2012 – 2014.

Introduction

The Social Programme Management Group (SPMG) was established in 2002 under the auspices of the County Development Board and was charged with the responsibility for the management of a 'Social Strategy' for South Tipperary for the period 2002-2012. All local agencies and representative bodies of the community and statutory social inclusion services were invited to be represented on the Group.

The Social Programme Management Group (renamed as the Social Inclusion Measures Group (SIM)) provided for greater co-ordination of services in the roll out of new national policies and strategies. Service co-ordination and integration was identified as being very important especially where citizens experience multiple forms of exclusion and disadvantage. The key goal was to establish integrated services to encourage social inclusion.

The background against which the '*South Tipperary County Strategy for Economic, Social and Cultural Development*' was drawn up in 2002 reflected many social inclusion challenges:

- County household income below the national average household income.
- Disadvantage in South Tipperary was experienced mainly in the Slieve Ardagh area and urban centres with high concentrations of public housing. Isolated pockets of disadvantage also occurred in rural areas served by small towns.
- Social inclusion was also a challenge facing specific target groups including people with disability, travellers, elderly, asylum seekers, those living in rural areas with no access to cars and those without access to childcare.

The objectives agreed at the outset for the Social Programme Management Group were to:

- Enable people who feel excluded from society to participate more fully in community life. The Programme supported local agencies and community development groups in areas with high numbers of socially excluded individuals to realise this objective
- attend to the needs of specific groups (such as early school leavers, people with disability, the elderly, members of the travelling community, etc) in identified sub-county areas
- Facilitate the development and implementation of county strategies for projects in childcare, children's play, etc.
- Encourage social inclusion service providers to change from a singular to a holistic approach in correcting social exclusion, especially in the priority target groups
- Target the inclusion of children and families experiencing discrimination and poverty in South Tipperary communities.
- Encourage an improvement in the work environment to support a better family lifestyle.

Significant progress has been made since 2000 in addressing the objectives set and full details of this progress can be accessed in the two reviews carried out:

1. *South Tipperary County Development Board Review of Performance 2002-2004*
2. *South Tipperary County Development Board Second Review of the Strategy for Economic, Social and Cultural Development 2005-2008*

Key Social Development Outcomes Achieved 2002 -2011

The SIM group has focused on two key areas:- i) the social inclusion of targeted groups and ii) the social inclusion of target areas

Target Areas

Greater interagency co-operation has been achieved in targeting resources to disadvantaged target areas. The RAPID programme in Tipperary, Carrick on Suir and Clonmel has seen major investment and programmes developed in these target areas (give figures of how much invested). Since its foundation the RAPID programme has worked hard in two areas:

- a) Task:- , the support, creation and funding of specific projects and process
- b) the creation of a multi-agency and community based consensus approach to the development of those living within the areas of greatest deprivation and recognised as RAPID areas.

Tipperary and Carrick-on-Suir towns are wholly RAPID areas while there are four distinct RAPID areas in Clonmel. In each case there have been a number of successful capital projects pursued and completed while there has also been a very significant amount of investment into the personal capital of those areas. In addition the process around the AIT (Area Implementation Team) table has resulted in much better working relationships between the community, the local authority and the other agencies. A recent example of interagency co-operative success has been the development of a community garden in the Cooleens area of Clonmel where the South Tipperary Development Company, VEC, Borough Council and RAPID have worked together to support the creation of a community allotment and, in the process, better community links and activity. The Slieve Ardagh area was specifically targeted in particular in the early years of the plan and a Slieve Ardagh task group was established to develop and implement a plan for the area. Significant physical infrastructure such as a family resource center, playgrounds and sporting facilities has been developed over the period. However the Slieve Ardagh area is still one of 5 classed in the county as being disadvantaged. CLAR areas also received some additional supports as part of a national CLAR programme.

Targeted Groups

Since 2003, the Social Inclusion Measures Working Group (SIM) has also prioritised target groups. Over the period in question, SIM has carried out service reviews on the needs of the Travelling Community, those at risk of Early School Leaving, those at risk of Anti-Social Behaviour, people with disabilities, the Elderly and those Unemployed or at risk of becoming unemployed. Following the service reviews, specific inter-agency groups were formed which have been implementing work plans to address the main gaps/weaknesses in services

People with Disabilities

The South Tipperary Disability Action Plan was developed during the period and most of it has been implemented with major investment by statutory agencies in physical adaptations to building:

- South Tipp VEC from 2002-2012 have spent €494,650 on access to buildings and services
- South Tipperary County Council: retrofit works in the order of 2,500,000 (This does not count the cost associated with new works or buildings)
- TRYS 46,500€

The Cashel Gold Star project was successfully developed into an all inclusive framework for making Cashel an accessible town for all including people with disabilities. Key achievements of the Gold STAR programme include:

1. Fifteen business/service providers awarded Gold Star Certificates for universal access
2. Development of Disability Awareness DVD - winning Best Short Film at the International Film Festival Ireland 2011.

3. Winners of the South Tipperary Entrepreneurial Awards Community Enterprise Section 2008/09
4. Over 200 local business people and community members trained in Gold Star Disability Awareness Training (GSDAT)
5. DVD launched on the Rock of Cashel in 2011 with Minister Kathleen Lynch and people with disabilities, reflecting accessibility achieved at the Rock of Cashel during the lifetime of the Gold Star Project. Late Mayor of Cashel Michael Browne greeted Queen Elizabeth at the Rock as a wheelchair user enabled to access and participate at the event.
6. The project has been recognized Nationally as a best practice model by former Minister John Moloney TD and has been promoted by the Dept of Environment, Community and Local Government as a model for roll out in 2013.

The Gold Star project is now being rolled out in Tipperary Town in partnership with people with disabilities and the business community and other towns around the county are looking at the initiative as a good practice project with the community and statutory sector collaborating to achieve Gold star status in terms of access. The South Tipperary Disability Groups Forum (STDGF) is well established and continues to promote issues of access. STDF works closely with other agencies in particular with the area engineers of South Tipperary County Council to assist in the prioritisation of key access projects. While development of physical access has been a priority the focus is now on creating opportunities for people with disabilities to engage in all aspects of life sporting, social and educational. Many agencies are now focusing on delivering programmes to engage people with disabilities for example:

- the Sports Partnership have a Social Inclusion Development Officer in place and a number of specific clubs that are inclusive of people with disabilities have been established.
- FAI Soccer Development Officer is now progressing to setting up soccer events and teams for children with disabilities
- The VEC support significant access to education opportunities for people with disabilities.
- A number of information days were held by STDGF providing information on services to people with disabilities over the period of the plan
- South Tipperary County Childcare committee have supported the establishment of SPEAK an active support group for parents with children with disabilities. Parents have been supported to complete DESSA (Disability Equality Training)
- As part of a national project, South Tipperary Local Authority in conjunction with The National Disability Authority, other Local Authorities and the STDF is rolling out a Disability awareness programme with Transition year schools called 'Enabling Access across Generations.
- South Tipperary Community Forum on behalf of the STDGF has been successful in being allocated funding from STDC in 2012 to complete a training programme in Traditional skills which will include training of people with disabilities to complete an traditional skills project on the boundary fence of the Sensory garden in Cahir.
- In 2012 South Tipperary Development Company (Local and Community Development Programme) funded a Mental Health Programme with South Tipperary Sports Partnership for Adolescents with a Disability.
- In 2012 South Tipperary Development Company funded a 'Skills for Living' Programme with the Three Drives Family Resource Centre to support young students with a disability to increase their independence.
- South Tipperary Development Company LCDP 2011-2013 delivers a number of initiatives within its Social Inclusion Employment Support Strategy which are fully inclusive and accessible to people with a disability. These include: COMPASS Employment Support Service, Self- Employment Options Programme, Micro Business Network, Customer Service Training and Preparation for Work Programme including Work Placement, Information EXPOS in Carrick on Suir, Clonmel and Tipperary.

While there have been many improvements in terms of physical access to services, many people with disabilities find it difficult to access opportunities in all aspects of life including participating in social, recreational and work activities. The focus of STDGF will be to support access for people with disabilities to access mainstream social, recreational and work opportunities.

The Travelling Community

The 2011 Census 2011 indicates that there are 546 people from travelling community living in South Tipperary. The South Tipperary Traveller Interagency Group was established in the early days of the strategy and now works on implementing the South Tipperary Traveller Interagency Plan. Significant interagency work has been completed over the life of the plan in terms of supporting travellers in relation to education, training and health outcomes. The traveller women in particular have engaged very well in many of these programmes. The HSE has made significant contribution to supporting traveller health initiatives over the period of the plan. Eight traveller women are now employed as primary health care workers (PHCW), three of the women are employed by the HSE and five women are employed by TRTP with funding from the HSE. The HSE provides funding for the Primary Health Care Coordinator employed by STDC who supports the three PHCW employed in the HSE. The HSE contribution to traveller health projects in South Tipperary in 2012 was €224,743: broken down as follows:

€75,000 Local Health Office.

€56,000 Traveller Community Health Project Tipperary Rural Traveller Project (TRTP).

€37,500 Primary Health Care Project Clonmel – coordinated by South Tipperary Development Company (STDC).

€36,243 Traveller Men's Health Project TRTP.

€20,000 Substance Misuse Project TRTP.

Similar contribution have been made by the HSE over the last number of years.

The South Tipperary VEC has been very proactive in engaging the travelling Community in literacy programmes. The Tipperary Rural Traveller Group is now well established and has a county wide remit for supporting the travelling community in South Tipperary. During the period of the plan (2002 – 2012) €5,703,124.61 was spent on traveller accommodation. During 2010/2011, Fás invested €116,000 in a Special Initiative for Travellers which supported employment and enterprise development. The South Tipperary VEC allocates in the region of €45,000 of their adult education budget annually to the traveller community.

The South Tipperary Traveller Interagency Group has developed into a strong interagency group over the period of the plan with key sub groups in place to progress the Traveller Interagency Plan. The Tipperary Rural Traveller Group has worked as a key player with the other agencies around the table to deliver supports and programmes for the travelling community. The Traveller interagency group has supported a co-ordinated approach to traveller issues which have assisted in trying to address complex problems.

Key achievements over the period of the plan include:

- Significant interagency cooperation over the period of the plan which has helped to solve complex issues as they arise
- A traveller mens engagement project was funded by Pobal and other local agencies including the South Tipperary VEC, HSE and the Local Authority which successfully engaged over forty men from the travelling community in personal development, literacy and traditional skills of metal, stone and timber work. This project funded the position of mens development worker to work intensively with the men and to build relationships with them. The funding is no longer in place but the mens development worker is retained and is now focusing on health and engagement outcomes for the men – the position is now funded by the HSE.
- Primary health care programme was piloted and evaluated which led to an extension of the programme outside of Clonmel – currently there are seven traveller women working as primary health care workers (3 employed by HSE in Clonmel co-ordinated by South Tipperary Development Company and 4 employed by Tipperary Rural Traveller Project in Tipperary and Cashel)
- National funding was allocated through Pobal to support the development of a Traveller men's project which focused on engaging with traveller men – the programme ran over a two year period and engaged with the men in building up linkages and relationships and to support the traveller men

in training in the areas of literacy, health, sports and skills such as metal work, stone wall building, stone carving and woodwork.

- Subsequent support from the Regional Traveller Health Unit has supported a Health and Wellbeing project for Traveller men run by TRTP.
- The VEC, in conjunction with Department of Social Protection, are supporting a 'family learning programme'- with five Traveller women participants. The women will become family learning tutors following the training course – and become involved in providing direct support to Traveller children and their parents.
- Tipperary Rural Travellers project have established a Substance Misuse Programme, with HSE support. A Substance Misuse worker has been providing direct support to the Traveller community, delivering drugs and alcohol awareness and linking members of the Traveller community with services they need. The project has published the results of a consultation exercise with Travellers on substance abuse challenges and service access issues.
- The South Tipperary Development Company (via the Local and Community Development Programme and in partnership with Tipperary Rural Travellers Project) continues to support initiatives aimed at enhancing employment-linked skills for Travellers. South Tipperary Development Company has invested €20,000 to date in skills training through TRTP for Traveller men, Leadership Training and Retail Sales Training for Traveller women. STDC will continue to support TRTP with its two labour market initiatives – An Siopa and Resident Caretaking Project.
- Cashel and Clonmel-based Traveller Primary Health Care Workers are now involved in an in-depth consultation process with Traveller families across the county. The aims are to assess current health needs and to collect feedback on Travellers' interaction with services. Results from this will inform the development of a comprehensive five-year health strategy for South Tipperary: involving service providers, Primary Healthcare Workers and Traveller projects. It is intended to publish and launch results of the needs assessment process in February 2012.

The travelling community have experienced significant cuts to services with withdrawal of Dept of Education teacher and traveller nurse. In addition the Local Authority has received no budget for traveller accommodation in 2012 and is unlikely to receive funding for traveller accommodation during the period of this action plan. All of these will have a significant impact on the travelling community over the next couple of years which will create a challenge for service providers and the community themselves. Living conditions have become critical for many families, and there is a very real danger of family break-up amongst the more vulnerable and excluded in the community. The Tipperary Rural Traveller Project is working to develop a proposal around an integrated family support programme to work with a selected number of these families.

Although FAS funding was allocated for an employment and enterprise project for a year there is nobody from the travelling community in employment or engaging in enterprise outside of the primary health care workers. One young traveller is on a work experience placement. In the present climate it will be extremely challenging to change this over the next two years. Considerable ongoing supports need to be put in place to achieve employment and enterprise outcomes for the travelling community.

While considerable predevelopment work has happened to support the engagement of traveller men and a considerable amount of men are continuing to participate in training initiatives there are no traveller men sitting on the Traveller Interagency group or its sub groups.

Older People

In March 2008, a 'Review of Services for Older People' was commissioned by Clonmel Community Partnership as part of the Social Inclusion Audit of South Tipperary. The review led to the establishment of an interagency elderly services group whose focus was to improve the co-ordination of services for older people in South Tipperary. . This group organised a conference of key stakeholders in October 2009. The aim of the conference was to provide a platform for local service providers in the area of elder

care to share information, highlight priority issues and focus on quality standards of service provision with a view to improving the co-ordination of services for older people in South Tipperary.

The interagency Elderly Services review group continued to develop an action plan to address some of the gaps. The group has now been renamed as the South Tipperary Age Friendly County Group and an Age Friendly County Plan for South Tipperary has been developed to cover the period of this plan. The group promote and co-ordinate the County Positive Ageing week annually which encourages communities and towns to focus on positive ageing and accessible services for older people. Inter-generational and social programmes are a strong focus of its activities, with many community organisations, businesses and people participating to make it an entertaining and dynamic programme of events for everyone. Other key achievements in relation to services for older people include:

- For a number of years an older persons network was established in Clonmel and supported by Clonmel Community Partnership
- Muintir na Tire – home insulation programme
- STDC county wide home repair services
- HSE led consortium successful in getting GENIO funding for a significant dementia project in South Tipperary

Population projections for South Tipperary (source NCAOP report 81) indicates that the population of people aged 65+ will increase by 46.6 % from 2006 to 2021 which will be twice the rate of growth of the overall population .

Comhairle na nÓg

Comhairle na nÓg was established in 2002 with a small group of twenty young people attending a youth consultation event. It has now developed into a meaningful consultative structure in relation to youth issues with over 120 young people attending the Comhairle AGM with the majority of schools and youth projects represented at the AGM. The Comhairle has been involved in the development of many strategies and action plans that impact on young people in the county over the last number of years for example South Tipperary County Councils Playground Strategy and it's Teenspace Strategy. The Comhairle na nÓg has influenced the South Tipperary County Councils Development levies scheme and they are also very active members of the County Young Mental Health group. This group has been involved in applications and submissions in relation to developing a Jigsaw site in South Tipperary. They have highlighted and focused on many issues relating to young people and they will continue to be a valuable forum in the county in relation to consultation with and partnering with young people.

A very significant outcome for young people in the county has been the development of youth spaces for young people. Lack of somewhere to 'just be' was identified as a priority in the early days of Comhairle na nÓg. There is now a good spread of dedicated youth centres/cafes in the county directly as a result of the re-direction of the Development Levies priorities. The challenge going forward will be to fund programmes of activities in the centres. The county is serviced by three youth services, Tipperary Regional Youth Service, Waterford and South Tipperary Regional Youth Service and Foroige. The main towns in the county have full time youth workers in place through the youth services. A significant challenge going forward is the continuous cuts to youth service programmes across the county and the low level of staffing numbers in the services which have an increasing number of young people seeking services for example the Clonmel Community youth project has only one full time worker while Waterford City has fifteen and is only double the size.

Early School leavers

Tracking of early school leavers and services for early school leavers has been a key issue for SIM and its Disconnected Youth Group (now renamed Connecting Youth group) over the period of the plan. The group focused on trying to source funding for an early school leavers tracking system and were successful in that a tracking programme Pathways was established in 2008, led by Waterford and South Tipperary Community Youth Services and funded by FAS for the South East Part of the county until early 2010. During 2009 65 early school leavers were actively mentored and 110 early school leavers were tracked. During 2009, Tipperary

Regional Youth Services developed a support programme for early school leavers, 25 young people were targeted and supported in relation to progression. This pilot programme has since developed and TRYS have led four employment programmes which have supported 128 Young people through targeted work placements and training. These programmes have been very successful with 85 supported to progress to employment or further training. TRYS co-ordinated and hosted a very successful international conference on employment and training for young people in 2012 at which over 25 foreign delegates attended from different youth training and employment programmes all over Europe. During 2010, a similar work placement training programme was developed as a RAPID action in Carrick on Suir with Carrick on Suir Musical Society taking the lead and supporting 20 young people in access to further training. TRYS and South Tipperary Development Company also developed a 'Wheeler Dealer' project in 2012 in which youth people restored a water wheel. Since funding ceased for the Pathways Programme, the Connecting Youth Group has been working on trying to establish a tracking system. South Tipperary Development Company has now established a tracking system in conjunction with the Department of Education School Welfare Officer. The South Tipperary Development Company will be working with service providers to identify opportunities for early school leavers in terms of education, training and work or work experience opportunities. This will continue to be a key objective of SIM for the next two years

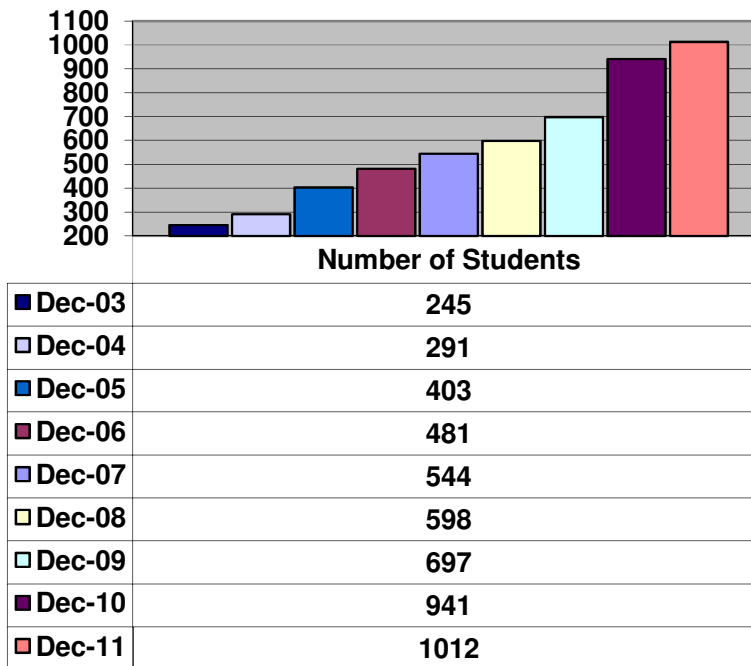
Childcare

In the early years of the CDB strategy lack of adequate Childcare services was a major barrier to Social Inclusion. The county is now well serviced with a network of childcare providers, 46 private providers, 50 registered childminders, 30 community (not for profit) childcare providers and 18 Parent & Toddler groups. The County Childcare Committee is well developed and providing a very effective support service to providers and parents. The County Childcare service has supported, in particular, groups at risk of social exclusion such as the travelling community to access services by developing relationships with the community and by developing appropriate promotional material. The free preschool year has had a major positive social inclusion impact by enabling all children to attend preschool. STCCC and Tipperary Libraries are currently implementing a literacy awareness programme for pre-school children in both North and South Tipperary.

Literacy & Adult Education

Inadequate literacy levels has been a major barrier to social inclusion. South Tipperary VEC has developed a substantial literacy service which is very client focused and which is having very positive effects on marginalised target groups and communities.

This graph represents the numbers of students attending South Tipperary VEC Adult Learning Scheme over a nine year period (2003 – 2011). In December 2003 there were 245 students accessing the service; in December 2011 that number had increased to 1012.



Approximately 15% of students have special needs; and a further 10% are from the Travelling community. The service is targeted at adults whose literacy and numeracy skills are inadequate for their functional participation in social and practical life, with priority given to those most in need. Some of the tuition is tailored to meet the needs of specific groups:

- Family Literacy
- Tuition for Adults with Special Needs
- Literacy for the Unemployed
- Workplace literacy
- Tuition for members of the adult Traveller community
- ESOL (English for Speakers of Other Languages)

Access to lifelong learning and adult education was a key issue in 2002 with limited availability of courses or programmes for adults outside of third level institution outside the county. The South Tipperary now develop a 'Stages' book outlining the wide variety of adult education opportunities available to people at all levels in the county. There is now a huge variety of programmes available from Fetac level 1 to 7 and this programme is a major social inclusion programme in the county giving access to education and training through guidance support, VTOS programmes, Youth reach and early school leavers programmes, Post leaving certificate courses and night classes, Back to Education Initiatives, Community Education programmes and Adult learning schemes. These programmes are delivered on a partnership basis with agencies, development groups and communities working together to deliver programmes. During the period of the plan Tipperary Institute now LIT Tipperary, gives people an opportunity to access third level locally which is very important for people that would not have the opportunity to attend third level because of family commitments, cost or transport barriers.

Vulnerable Families

Over the last number of years, SIM has focused on 'Vulnerable Families' as a key issue. In many cases the same families are presenting to different agencies for support. Services such as Spafield Family Resource Centre, Suir Community Development Project, Knockanrawley Resource Centre, Millenium Resource Centre

and The Three Drives Family Resource Centre in Tipperary Town have been providing significant supports to vulnerable families. The second chance programme was established by South Tipperary County Council's housing section in 2007 on a pilot basis and seeks to link vulnerable clients and clients at risk of losing their tenancy into supports services such as addiction services, education and training and family support services. The Second Chance Programme, a tenancy support programme, commenced as a pilot in 2007. Since the pilot, 313 tenants have been involved in the second chance programme and during this period only 3 tenants were unable to sustain their tenancy.

Second Chance County Statistics

- 131 from 07 to end 2010
- 43 in 2011 some still active brought forward from 2010
- 34 to date 2012 some still active brought forward from 2011

The development of Barnardos services in the county has also impacted on vulnerable families. The Barnardos Family Welfare Conference Service is a key resource to support vulnerable families and children in the county, and since it set up in 2006 has provided a service to 132 families and 252 individual children. Barnardos Family Support service works directly with children and families in Clonmel and since mid 2008 has worked with 107 families and 157 individual children.

There are considerable gaps in family support services across the county and many vulnerable families do not have a support service. Family support and mental health issues are expected to be a considerable issue for the county due to the economic situation with many households under financial pressure to keep homes.

Children Services Committee

In 2011, the SIM group was instrumental in initiating and supporting the establishment of The South Tipperary Children's Services Committee. This is an interagency forum made up of service providers that have a role in children services including statutory and community services and is led up by the HSE and supported by the Local Authority. A number of SIM working groups, which related to children, have now been formally transferred to working groups under the Children's Service Committee. Working groups include:

- Connecting Youth
- Family Support.
- Free from Harm
- Youth Mental Health:
- Best Practice Inter-Agency Protocol

The Children's Service Committee are in the process of developing a three year plan which will be finalised in autumn of 2012. This Plan will continue to be a priority for SIM who will now have a monitoring and overseeing role in relation to same.

Community Safety Group

The Community Safety Group (previously the Safety and Security Partnership) is working to implement a Community Safety Strategy with annual priorities, under the strategic supervision of the County Joint Policing Committee (JPC) in partnership with the JPCs of the Town Councils.

While transport is still a major issue in relation to social inclusion, the development of the Rural Transport Scheme has enabled access to services from rural areas for many marginalised people in particular older people with no transport. Ring a link has now an annual passenger trips figure of over 30,000 trips in South Tipperary.

Social Inclusion Employment Strategy

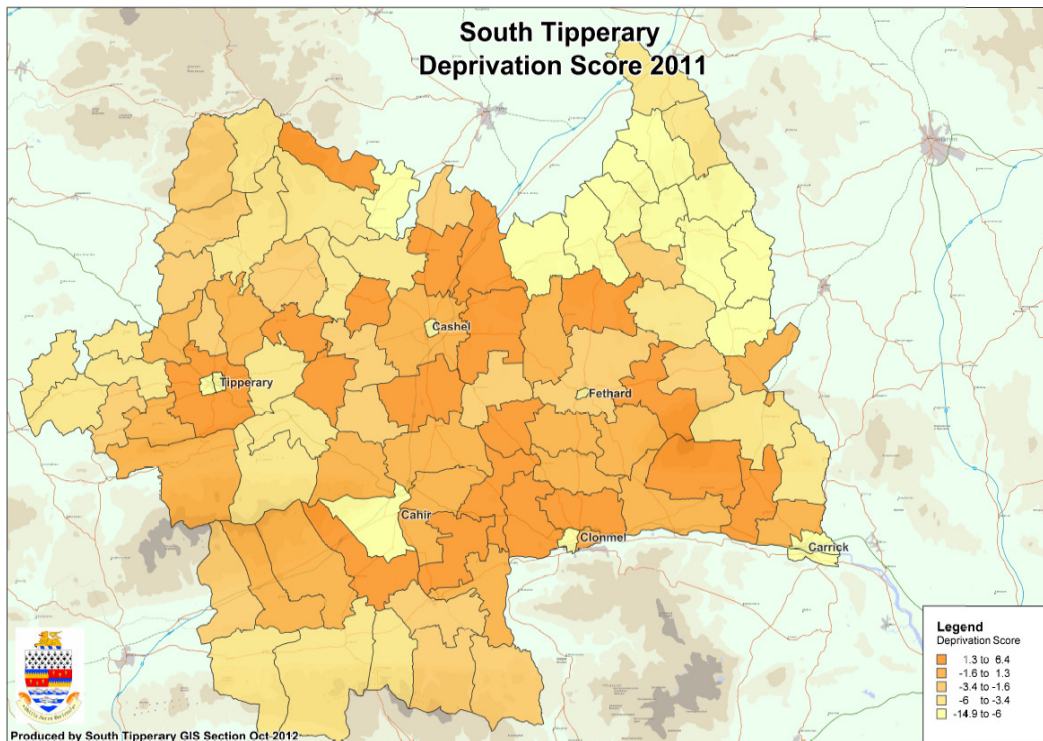
In 2011 SIM initiated and supported the development of a County Social Inclusion Employment Action Plan which includes all the employment supports being delivered at county level for people at risk of social inclusion and long term unemployment. South Tipperary Development Company has taken the lead to co-ordinate the development of the action plan and to coordinate the annual review of the action plan. It is important that this remains a priority for the next couple of years

Overview of Social Performance and Indicators

In the compilation of the 2002 County Strategy for Economic, Social and Cultural Development, a series of social inclusion indicators were identified which would be used to assess the performance of the county and its various agencies in addressing the social inclusion challenges. Relevant additional indicator data from the 2006 and 2011 Census are also included.

Year	1991	1996	2002	2006	2011	2011 National figure
Age Dependency						
South Tipperary	40.9	37.8	35.3	34.9	35.9	31.95
Age Dependency (Ratio) by Sex, Province County or City, Age Group and Census Year						
			2006	2011		
Both sexes						
State						
0 - 14 years			29.7	31.9		
65 years and over			16.1	17.4		
South Tipperary						
0 - 14 years			31.8	32.7		
65 years and over			19.4	20.4		
Proportion of Population with Third Level Education						
South Tipperary	9.4	14.0	17.8	21.7	21.9	
Proportion of Population with Primary Education Only						
South Tipperary	37.3	30.2	23.8	20.1	17.0	
Population aged 15-17 whose Education ceased at 16 years or earlier						
South Tipperary				130		
Persons with a Disability						
South Tipperary				8791(10.6%)	13001(14.7%)	13%
County: Relative HP Index Score 2006-2011						
Local Authority Area	Absolute HP Index Score 2006		Absolute Index Score 2011		Change in absolute HP Index Score 2006 - 2011	
Tipperary SR	- 3.63		- 10.53		-6.90	
South East	- 2.90		- 10.25		-7.35	
NUTS II Region SE	0.60		-5.76		-6.36	
State	- 0.23		-6.78		-6.55	

Source : <http://www.southtipperaryinfo.ie/info/index.html>



Target Group	2002 data	2004 data	2008 data	2011/2012 data	Source
Unemployed	3686 (June)	3882 (June)	5880 (Dec 08)	11.52 % for South Tipperary, 12.21 % in S.E., and 10.83 % nationally (CSO, 2011) (8,011 persons in South Tipperary – 2,604 women; 5,407 men).	Live register figure
Lone Parents	1165	1527	1806	(census) 1,259 recipients of One Parent Family payments: 150 (Cahir); 238 (Carrick); 194	Dept of SFA & Census
Travellers	101 families	115 families	129 families	140 families Dec 2011	Housing Stats/CSO
Asylum Seekers & Refugees	83 (Jan)	112	112	96 (Nov 2012)	Reception and integration Agency
Referrals of people over 65 to senior case worker in protection services for older people			54	71 in 2011	HSE
People with Disabilities	1421	1024	1422	1212	HSE
Children in care	146	106	141	199(2012) Children in the care of the HSE for 2009, 2010 and 2012, are, respectively, 162, 158 and 199.	PCCC, HSE
Families engaged with Social				600	HSE/Children Services Committee

work services					
Small Holder	949	845	800	800	Teagasc
Mental Health				2010: 179 referrals to Child & Adolescent Mental Health Services 2011: 204 referrals to Child & Adolescent Mental Health Services 51 referrals of 16-17 yrs to AMHS <ul style="list-style-type: none"> • 2012 (August): 124 referrals to CAMHS • 49 of 16-17 yrs to AMHS Adult Mental Health Figures – to be included	HSE

In reviewing and updating these figures a number of key findings emerge

- a) There was significant progress in addressing the unemployment issue from 2002 up to and including Dec 2007 but there has been a very significant increase in unemployment decline due to the various economic circumstances that have emerged both nationally and globally. South Tipperary has been particularly badly affected by this and as such will be a key priority of SIM for the 2012 – 2014
- b) Traveller families – this is a growth in numbers which indicates an increased need for services in relation to accommodation, education and employment needs.
- c) We have a higher age dependency ratio in South Tipperary than the national average in both the youth age dependency ration and older person’s dependency ratio. This has implications for services in early years and services for older persons.
- d) Currently there are 600 children on the Social Workers case files and close to 200 children in care – which indicates a significant amount of vulnerable families in South Tipperary
- e) 5 DEDs in the county (2 in The Slieve Ardagh area in the NE; the other 3 are in Clonmel, Tipperary town and Carrick-on-Siúr) are designated as Disadvantaged, in other words, having a Relative Deprivation score of ≤ -10 .
- f) The 2011 census indicates a figure of 14.7% of population have a disability which again demonstrates the importance of implement Disability Forums plan to support inclusion of people with disabilities into mainstream services.
- a)

The Social Inclusion Structures in South Tipperary.

Over the period of the plan, Clonmel Community Partnership, Community Development Projects and Family Resource Centres have developed and have been servicing targeted groups at risk of Social inclusion. However one of the major issues was the gap in social inclusion services around the county. The last two years have seen significant changes with the development of a county wide Social Inclusion programme. South Tipperary Development Company (STDC) is co-ordinating the delivery of these services. Suir Community Development Project is now integrating with South Tipperary Development Company and Knockanrawley Resource Centre has entered into a Service Level Agreement with STDC for the delivery of the Programme in their catchment area. A 3 year Strategic Plan has been developed to reflect the programme of work with a total annual budget of €649,342.58. The Tipperary Rural Travellers Project operates under The National Traveller Partnership supporting the travelling community in South Tipperary. The family resource centres, Spafield, The Three Drives and Millenium have developed in scale with increased facilities and programmes over the period of the plan to support families and target groups at risk of social inclusion. These social inclusion programmes/centres operate the key social inclusion infrastructure in the county and they play a very important role in delivering social inclusion services at local level to target groups. They will be a very important cog in the delivery of services and support over the next two year plan.

The South Tipperary VEC operates a wide and varied programme of adult education opportunities which is in itself a very extensive social inclusion programme as it give opportunities to many early school leavers to come back to education with progression opportunities. It is also a strong county wide structure

The Local Authority, through its Local Authority Housing Estates is also a particularly critical piece of the social inclusion jigsaw. As a landlord, it has direct contact with some of the most marginalised individuals and communities in the county and is a particularly important resource. In addition, it is in a position to actively engage with this target group through its social worker, its tenant liaison officers and the community houses which it also supports.

The RAPID Area Implementation Teams which have been developed under the auspices of the Local Authority over the last three years have become a significant Social Inclusion infrastructure in the three RAPID towns of South Tipperary. Significant improvements have been made to the lives of people in the RAPID areas over the last ten years and the interagency process has proven to be effective even in times of more limited resources.

The Children's Services Committee was established in Sept 2011 to promote and develop planning & coordination in service provision for children & young people so as to secure better outcomes in terms of their welfare, wellbeing & development and will be developing a Children's and Young person's plan by the end of 2012/early 2013.

The Youth Work Services also provide an important and valuable service for many disconnected young people. Currently there are three Youth Work Service providers operating in the County;

- Foróige have a Neighbourhood Youth Project in Carrick on Suir and numerous volunteer led youth groups throughout the County
- Tipperary Regional Youth Service have five projects operating in South Tipperary; a Special Project for Youth (SPY) in Tipperary town, a Garda Juvenile Diversion Project also in Tipperary town, a Neighbourhood Youth Project in Cashel, a Rural Outreach Project working with their numerous volunteer led youth groups and a Youth Information Project

- Waterford and South Tipperary Community Youth Service have four projects operating in South Tipperary; a Special Project for Youth (SPY) in Clonmel, two Garda Juvenile Diversion Projects based in Clonmel and Carrick on Suir, and a Youth Information Project

Additional to the main Youth Service Providers, South Tipperary Development Company currently oversee the Southside Youth Project based in the RAPID area of Clonmel and a subsidiary of Place4U operates the Place2Bee Youth Café in Clonmel town centre which is volunteer-led and affiliated to Foróige.

Other support structures include; the Gardai Youth Diversion projects; probation Office; Department of Social Protection; South Tipperary County Childcare Committee; South Tipperary Community & Voluntary Forum etc.

The Community & Voluntary sector play a significant role in particular in the area of family support, services for older people and community supports and facilities.

The Social Inclusion infrastructure in South Tipperary is significant compared to some other counties and there is a good history of co-operation and joint working. There is a need for continual co-operation and collaboration on supporting access to services for those who are marginalised and disconnected from services to ensure there is Social Inclusion of target groups and areas in South Tipperary going forward.

Challenges

There are a number of on-going challenges which the County must prioritise. The changing economic circumstances has opened up additional challenges and cohorts of the population who have never before felt marginalised or excluded are now experiencing same. So whilst the challenges remain the same, the numbers experiencing these challenges have significantly increased.

It is not possible to address all of the difficulties within the time frame afforded by this Document. The key purpose of this Plan is to hone in on areas where agencies can work together to effect real change. The purpose of this plan is to only focus on areas where additional value on service delivery can be had by agencies working together. It is expected that the standard day to day operational service as provided by agencies to key groups and areas will continue to progress. For this reason, the intention of this document will be to focus on a couple of key areas where through collaboration and co-operation, a service can be more effectively delivered.

The noteworthy challenges include

- Increasing number of unemployed and more long term unemployed
- Support for vulnerable families, children and young people
- Lack of a budgetary resource to implement the required changes/meet the needs of key priority groups (such as provision of traveller accommodation; literary support ; supports for people with disabilities; etc)

The key challenges for the county are to, maintain social inclusion services, focus on vulnerable families, consolidate social inclusion budgets and to work together to maximise synergies and ensure the services can be spread as far as is effectively possible. All services have experienced significant cuts and are struggling to hold staff and deliver their services.

Strategy Statement

Definition of Social Inclusion:

Social inclusion is defined as “a process which ensures that those at risk of poverty and social exclusion gain the opportunities and resources necessary to participate fully in economic, social and cultural life and to enjoy a standard of living and well-being that is considered normal in the society in which they live” (Joint Report on Social Exclusion 2004).

Vision for the South Tipperary Social Inclusion Strategy

“To make a positive impact on those who are marginalised and experiencing social exclusion in South Tipperary through the provision of improved, coordinated and integrated services while maximising existing resources”.

Social Inclusion Measures Group Key Social Priorities identified for 2012 – 2014

Following a consideration of the progress made over the last 10 years, a review of the issues that could not be progressed and an assessment of the new challenges facing the services who actively seek to address issues of social exclusion, a workshop was held in late 2011 with all members of SIM to ascertain the key priorities. It was agreed that priorities would have to take into consideration the following and be prioritised on the basis of

- The current constraints on personnel and resources
- the potential for additional cut backs over the next two years,
- to include only actions where a lead partner or an interagency group was established or where there was a willingness and ability to progress the action
- value could be added to the service being provided/the challenge being addressed

South Tipperary Social Inclusion Measures Group Priorities Areas

Targeted Areas

1. RAPID Areas

Targeted Themes

1. County Social Inclusion Employment Support Strategy
2. Developing South Tipperary as an Age friendly County
3. Disability
4. Community Safety
5. Local Drugs Task Group Action Plan
6. Social Inclusion Cultural Actions
7. Mental Health

Targeted Groups

8. Children & Young People
 - a) Children’s Service Committee
 - a. Connecting Youth group:
 - b. Youth Mental Health Group:

- c. Family Support Sub group :
- d. Free from Harm Sub-Group:
- e. Best Practice Inter-Agency Protocol Sub-Group:
- b) Youth
 - a. Comhairle na nÓg
 - b. Tipperary Music Education Partnership
 - c. Teenspace Strategy

9. Traveller Community Traveller Interagency

Following these agreed priorities, a series of actions were drawn up and agreed/progressed from previous years.

Priority Area	Key Action	Activities	Indicators
Partners	Community and Agencies		
RAPID	Clonmel RAPID,	<ul style="list-style-type: none"> • Review of sub-group plans to form new RAPID plan • Engagement with communities towards renewal of community reps process • Engagement with communities towards identification of new tasks • Maintenance of RAPID AIT process • Following up of any funding opportunities • Expenditure and admin of C. S. Budget 	<ul style="list-style-type: none"> • New RAPID Plan • Increased Community Rep representation • New task list for plan
	Carrick on Suir RAPID	<ul style="list-style-type: none"> • Maintenance of RAPID AIT process • Following up of any funding opportunities • Expenditure and admin of C. S. Budget 	<ul style="list-style-type: none"> • Continued AIT meetings • Applications submitted or assisted for any funding source • Expenditure of CSB
	Tipperary Town	<ul style="list-style-type: none"> • Maintenance of RAPID AIT process • Following up of any funding opportunities • Expenditure and admin of C. S. Budget 	<ul style="list-style-type: none"> • Continued AIT meetings • Applications submitted or assisted for any funding source • Expenditure of CSB

Priority Area	Key Action	Activities	Indicators
Partner	South Tipperary Development Company, South Tipperary VEC, Millenium Family Resource Centere, Spafield Family Resource Center, Knockanrawley Resouce Center, South Tipperary Community & Voluntary Forum HSE , County Council, Carers Association, Community & Voluntary Forum, South Tipperary Development Company, Voluntary services		
County Social Inclusion Strategy	Implement County Social Inclusion Employment Support Strategy	Development and implement of the programmes as follows <ul style="list-style-type: none"> • Outreach & Engagement programme • Personal Development, Assertiveness, Social Skills, Communication, Team Work • Confidence Building, Literacy and Education • Soft Skills Training. • Job Preparation CV preparation, Interview Skills and mentoring. • Specific Skills Training linked to local and regional employment market and opportunities • Enterprise Development. Incentives and mentoring for individuals and community projects. • Work Experience and Work Placement Programme. • Equality in Employment for people with disabilities • One-Stop on-line Shop for information and linkages. • Employment Market and Policy Work at county level – CBD, IDA, Planning, CEB etc., • Reduce Barriers to work 	No of programmes developed and no of p articipants

Priority Area	Key Action	Activities	Indicators
Partners	South Tipperary Community & Voluntary Forum, South Tipperary County Council, South Tipperary VEC, Tipperary Libraries, HSE, Spafield Resource Center, Muintir na Tire, Volunteer Center		
Age Friendly County	Ongoing development of Age Friendly County Group and implementation of action plan	South Tipperary Age Friendly County Group Action Plan 2012-2014 – further development and implementation of Action plan under the following outcomes: <ul style="list-style-type: none"> • Outdoor Spaces and Buildings • Transportation • Housing • Respect and Social Inclusion • Social Participation • Communication and Information • Civic Participation and Employment • Community Support and Health Services 	No of actions in plan implemented

Priority Area	Key Action	Activities	Indicators
Partners	HSE Community Development Worker, South Tipperary Community Forum, South Tipperary County Council Access Officer, Disability groups, South Tipperary VEC, Disability Federation, Disability Forum, Tipperary Gold Star Steering Group, South Tipperary Development Company, County Childcare Committee SPEAK group, Volunteer Center		
Disability	Development of STDGF as a forum for people with disabilities	Support ongoing development of capacity and membership of the Disability Forum through training and extending membership Dissemination of Information to members and to wider community on Disability issues Increase awareness of disability issues and make regular Submissions to Relevant to various Strategic Plans of Statutory Agencies Organise, host and apply for funding for information events relevant to the issues of Disability	No of communications events held Membership of the Disability Forum and no of meeting held No of information dissemination activities undertaken
	Development of Disability forum action plan 2012 – 2014 and implement plan	Identify priority areas and develop achievable action plan Source funding for projects	Action plan in place and being implemented
	Support rollout of Gold Star Project	Develop Gold Star in Tipperary Town -Establish steering group, Develop action plan, Seek funding resources, Implement action plan	Gold Star Developed in Tipperary Town and action plan being implemented. Promotion of Gold Star in other areas nationally
	Increase access to formal and informal educational, recreational and cultural activities and resources and employment opportunities for people with disabilities	Encourage and support people with disabilities to link into mainstream Education, recreational and cultural activities Hold an annual communication event re disability issues where all service providers promote educational, cultural, recreational, social and work opportunities specifically targeting people with disabilities	No of events held and no of people with disabilities who have attended
	Support families with family members with people with disabilities	Support and encourage development of SPEAK group Investigate the development of volunteer programmes to give respite and support to families with children with disabilities	No of families supported

Priority Area	Key Action	Activities	Indicators
Partners	Gardai, RAPID AIT's, Communities		
Community Safety	Implement Community Safety Strategy	<ul style="list-style-type: none"> • Referrals of drugs users to the Initiative by Gardai.. • Family Support Group/ Community Policing Unit-Family Support Group- • Education and Awareness- • Broken Barriers Project-Community based project to address issues that people within the community wish to disclose to Gardai in a confidential setting. • Drop in Service- the Elm Tree project in Elm Park is supported by Community Gardai. It's designed to allow individuals to engage in a safe environment with the opportunity to discuss their concerns and also allows them the opportunity through dialogue to identify weaknesses in their own habits and behaviours thus providing community development. 	<p>No of education and awareness programmes undertaken</p> <p>No of people accessing drop in service and broken barriers project</p>

Priority Area	Key Action	Activities	Indicators
Partners	LDTF & RDTF, CBDI, DEO, F.R.C, TRYS, WSTCYS, TRTP		
Local Drugs Task Force Plan	Support the Implementation of Local Drugs Task Group Plan	Develop South Tipp Local Drug Plan in accordance with R.D.T.J. Interagency Conference 2012-2014	•
	To create awareness re substance misuse / alcohol with parents	Promote existing Projects. Promote Projects to support Parent's awareness around substance misuse or alcohol, primary, previous, own use, harm reduction.	Parents attendance Awareness Sessions
	To create awareness re substance misuse / alcohol with young people	Promote awareness y/p, alc. And substance misuse around exam time / junior cert. and leaving certificates Examine possibility of developing g programme for 9-12 years olds and their parents Encourage Comhairle na nÓg to take it up as an issue for 2013/2014	Statistical J.D.P. A & E Schedule Attendance around time results
	To create awareness in Traveller Community alcohol / substance misuse	To provide Traveller specific workshops around alcohol substance misuse	Attendance Travellers

Priority Area	Key Action	Activities	Indicators
Partners	Cultural Providers SIM group		
Social Inclusion Cultural Actions	Youth	<p>Bid for NYD Community youth drama Training programme and implement training programme in South Tipperary in 2013</p> <p>Seek funding for a facilitator to work with North & South Tipperary Music Education Partnership to develop a whole county bid for Music Education Partnership funding</p> <p>Develop a pilot social inclusion music programme and seek funding for same</p>	No of additional Social inclusion/cultural actions arising from joint SIM /Cultural providers
	Support linkages between Cultural Providers and Social Inclusion Projects	Have cultural providers as invited guests to SIM sub groups to explore joint activities	
	Source funding for social inclusion cultural activity/actions	Identify any funding opportunities to fund additional programmes	

Priority Area	Key Action	Activities	Indicators
	HSE , County Council, Carers Association, Community & Voluntary Forum, South Tipperary Development Company, Voluntary services		
STAN- Mental Health	To raise awareness of Mental Health & de-stigmatise the understanding of Mental Health in South Tipperary	Develop Awareness Campaign including further development of STAN web site www.stanmentalhealth.ie	Usage of STAN website
	To promote & raise awareness & information sharing of Mental Health supports & services available in South Tipperary	Networking events for service providers	2 networking events per year.
	Promote mental health awareness training for all in South Tipperary.	<ul style="list-style-type: none"> • Complete audit of relevant training available that can be delivered in South Tipperary • Seek funding opportunities for mental health training. • To provide training for frontline staff from community & statutory organisations and any other frontline service providers • Identify and source training for the following target groups: • Frontline staff, Carers, Workplace employers, Community workers, voluntary organizations, Youth workers, Sports groups/ Coaches/ Schools / Teachers. 	No of training programmes organised

	Suicide and self harm prevention	<ul style="list-style-type: none"> • Provide Community based Training & Information in South Tipp. • Develop a suicide bereavement support group in South Tipperary • Promote Regional Suicide Resource Office & Counselling Service & all services • Work with the Regional Suicide Resource Office & other relevant organizations re. Bringing services and supports to South Tipperary. For example: <ul style="list-style-type: none"> • Suicide Awareness Education • Promote ASSIST Training • Support the establishment County Suicide Bereavement Support Group • Self Harm Prevention initiatives • Promote targeted strategy to specific groups such as Teachers, Youth Workers, Community Workers, Front line staff , Etc. 	No of initiatives/training developed in South Tipp
--	----------------------------------	---	--

Priority Area	Key Action	Activities	Indicators
Partners	HSE, South Tipperary County Council, South Tipperary V.E.C., Garda Síochána, Probation, Dept. of Social Protection, Local Development Company, Community & Voluntary Forum, Youth services, Co. Childcare Cttee., Primary Schools (IPPN), Secondary Schools (NAPD) FRC/CPD Network, Tipperary Rural Traveller Project, NEWB, Barnardos		
Children & Young People Children Services Committee	Development of Children's Services Committee	Develop and implement Children & Young People's plan for South Tipperary focused on the following priority areas: Mental Health Bereavement & Loss Early School Leaving School Absenteeism Vulnerable Families Early Years Childhood Development Children with Disabilities Children & Young People in the Travelling Community Alcohol & Substance Misuse Social Media Bullying Early School Leaving Improved Inter-Agency Cooperation Children First implementation	See details in CSC Plan

Priority Area	Key Action	Activities	Indicators
Partners	Waterford & South Tipperary Community Youth Services, Tipperary Regional youth Services, Foroige , HSE, County Council, Schools, South Tipperary VEC		
Young People	Support the ongoing development of Comhairle na nÓg as a key consultative forum for young people	<ul style="list-style-type: none"> Promote and support the development of Comhairle na nÓg Support the development of Comhairle na nÓg steering committee Promote the involvement of seldom-heard young people in Comhairle na nÓg Consolidating and influencing the status of Comhairle na nÓg in local strategies, structures and organisations Support the development of Comhairle na nÓg and their key priority area e.g. youth mental health 2012/2013 Support the development of annual AGM of Comhairle na nÓg as an opportunity for young people in the county to have their say and identify issues that are important to them. 	<p>No of key consultation /partnerships developed with Comhairle na nÓg</p> <p>No of seldom heard young people involved in Comhairle na nÓg and its AGM</p> <p>No of quality key initiatives that Comhairle progress and participate in</p>
	Tipperary Music Education Strategy	<ul style="list-style-type: none"> Support the development of a whole county Tipperary Music Education Partnership Develop a Music Education plan for young people Source national funding for Music Education Plan Develop social inclusion music education programmes with disadvantaged young people as a social inclusion model 	
	Teenspace Strategy	<ul style="list-style-type: none"> Continue to develop County Council Teenspace Strategy and develop annual action plans 	
	Youth service Providers	<ul style="list-style-type: none"> Support the continued development of Youth service Providers in the county 	

Priority Area	Key Action	Activities	Indicators
Partners	HSE ,County Council, Suir Community Development Project, Millenium Resource Centre , Youth services, DSFA , Clonmel Youth Training, County Childcare, South Tipperary Development Company , Primary Health Care project, Garda Síochána, Tipperary Rural Traveller Project, South Tipperary VEC, Spafield Resource Centre, Knockanrawley Resource centre, Mens Development Network		
Traveller Interagency	Implement Integrated Plan for the Delivery of Services to Travellers in South Tipperary 2010 – 2013	Implement and review actions of Traveller Interagency plan which is focused on the following themes <ul style="list-style-type: none"> • EDUCATION AND TRAINING & SUPPORTS • HEALTH & SUPPORTS • ACCOMMODATION & SUPPORTS • EMPLOYMENT & SUPPORTS • YOUTH • COMMUNITY & SAFETY 	No of travellers engaging in education and training programmes Traveller health statistics